

News!
GLOBE
MADE IN ITALY

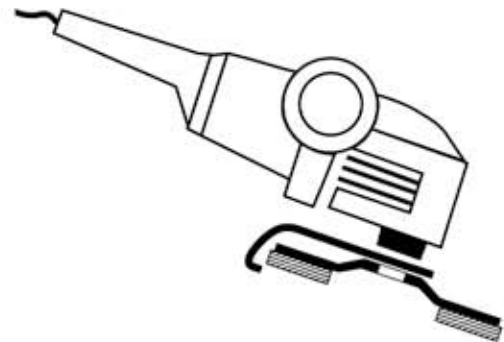


Granulometry



FINISHING PRO

**GRINDING AND
POLISHING
IN ONLY ONE
OPERATION**



FLAP DISCS

FINISHING PRO: FEATURES AND ADVANTAGES...

HOW IT IS MADE.

Finishing Pro was born from the idea of creating a new generation flap disc by combining normal flaps of abrasive canvas with flaps of abrasive cloth, typical of finishing discs. Finishing Pro is available in 3 grain types: **fine, medium, coarse.**

HOW IT WORKS.

Abrasive canvas flaps are for "roughing" while abrasive cloth flaps, due to their softness and fine grit, polish metal giving it a very low surface roughness and a shiny aspect.

The high quality of materials used, developed from a constant research, offers many advantages: in particular the abrasive canvas, rich in cooling compounds, allows a quick abrasion but without overheating and pitting, while the abrasive cloth, of excellent manufacture, efficiently resists to overheating, offering a long lifetime and polishing without melting or making the metal dirty.

RECOMMENDED APPLICATIONS.

All applications in which a high finishing degree has to be reached (also in the food industry); suitable for light TIG weldings, to round off edges, to remove from surfaces: imperfections, scraps, light misalignments, oxidations, decolorizations, drops of weldings and paint.

It is suitable for the finishing of stairs, railings, marine installations, installations for food, frames and kitchens. Finishing Pro can work on all main ferrous materials, stainless steel, aluminium and alloys in general.

THE ADVANTAGES OF FINISHING PRO.

Simplicity and safety in working. No risk of damaging the workpiece in case of excessive contact pressure or involuntary contact with surfaces not to be treated.

Carries out light grinding and polishing with one tool only and in one passage only.

Cancel idle times due to passage to the use of roughing products (flap discs or fiber sanding discs) to finishing products.

Easily generates bright surfaces with uniform finishing, also in the hands of non-expert operators.

More precision without mistakes and without "damaging effects" on curved surfaces, thanks to the softness of flaps. Normal roughing abrasive products follow metal curves with difficulty and, while abrading, can create flat areas that are sometimes impossible to restore.

Economy of working due to recovering of idle times and to the use of one only product instead of carrying out classic finishing steps with products having more and more fine grits.

Comfortable use thanks to softness, low noise and almost zero vibrations.

USE...

SPEED.

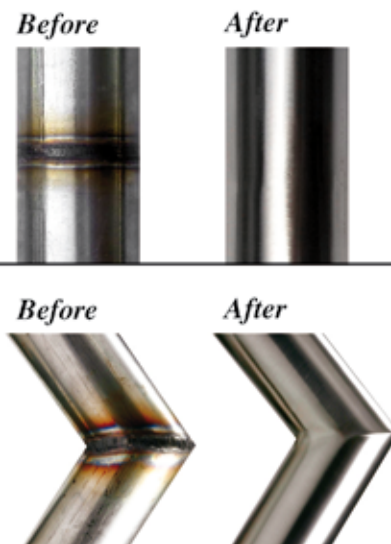
Finishing Pro discs can be used up to 13300 rpm (\varnothing 115 mm) and 12250 rpm (\varnothing 125 mm); anyway in order to obtain the best results, it is convenient to use discs between 3300 and 6000 rpm on machines with adjustable speed. This gives the disc the best performance and maximum lifetime.

WORKING PRESSURE.

Press the machine more to obtain a quicker abrasion; lighten the load to favour the finishing degree.

WORKING ANGLE.

To obtain the best results, always use with an angle between 5° and 10° .



Cleaning and polishing of weldings.

